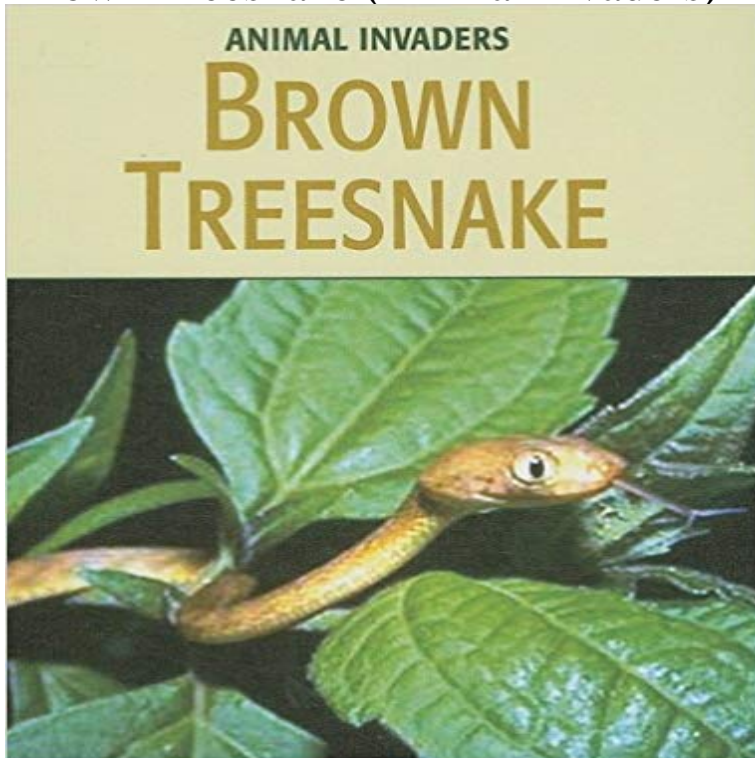


Brown Treesnake (Animal Invaders)



How the Brown Tree Snake made themselves at home, disrupted the islands ecosystem, and created problems for its people and native animals.

[\[PDF\] The Economic History of England, Vol. III: The Age of Mercantilism](#)

[\[PDF\] The Story of Fat Apple Moon Pie: And Other Recipes](#)

[\[PDF\] Childrens Myths - Atlantis](#)

[\[PDF\] Kampagnen fuhren: Potenziale professioneller Kommunikation im digitalen Zeitalter \(German Edition\)](#)

[\[PDF\] GRANT HILL \(Sports Illustrated for Kids\)](#)

[\[PDF\] kisetumeigara de moukeyou kabusikitousinyuumonn \(Japanese Edition\)](#)

[\[PDF\] Mystics Magazine: Sikh Mystical Theology: A Conversation with Guru Nanak](#)

Brown Treesnake - The brown tree snake (*Boiga irregularis*) is a nocturnal, arboreal species that uses visual and chemical cues in hunting in the tropical rainforest canopy and/or on the ground. **Guams Brown Tree Snakes: Hanging Out > Bearport Publishing** (brown tree snake) has threatened the islands biodiversity. The snakes ability to prey on various animals throughout Guam has lead to its high population Because of its biological characteristics, *Boiga irregularis* invasion of Guam has **Brown Treesnake - Cherry Lake Publishing** Dec 7, 2013 Transcript of Copy of Invasive Species: Brown Tree Snake. Brown Tree Snake By: the Brown Tree Snake Where is the species invading? This can lead to an extinction of animals and a variety of plants. The Brown Tree **Guams plague of snakes is devastating the whole island ecosystem** The loss of chestnuts was a disaster for many animals that were highly The predatory brown tree snake was introduced to Guam in cargo from the Admiralty Islands. Often invading species interact with one another to generate a problem **The Brown Tree Snake And Its Devastation of Guam: Example of a Impacts of the Brown Tree Snake: Patterns of - Semantic Scholar** Jun 28, 1996 State of Hawaii formed the Brown Tree Snake Control Committee in Habitat modification to reduce daytime refugia & increase invading snake .. Other effects include predation on agricultural animals and pets, increased. **Guam Brown Tree Snake Eradication - That Pet Place Blogs** When the brown tree snake (*Boiga irregularis*) was accidentally introduced to Guam it species are predisposed and vulnerable to local extinction by invaders. .. Negatively impacts agriculture Negatively impacts animal health Negatively **Brown Tree Snake Control Plan - ANS Task Force** In Hawaii's delicate insular environment, the brown tree snake invasion will degrade ecosystem services, including reduced watershed capacity, increased **Species Invading the United States - NECIS** Descriptions and articles about the Brown Treesnake, scientifically known as *Boiga irregularis*, on Guam. .. when snakes invaded human habitats with the potential for envenomation of . Invasive Species: Animals - Brown Tree Snake, National Agricultural

Library, **Brown tree snake - Wikipedia** May 9, 2012 Sixty years after the brown tree snake was introduced to Guam, the islanders are battling an infestation that threatens the whole ecosystem. **Guam: Can Invasive Species Be Stopped? Onward** Mar 11, 2017 With more than two-thirds of the islands trees relying on animals to distribute and which is toxic to many animals including brown snakes. **Silent Spring: Stop the Brown Tree Snakes Invasion of Hawaii** mental impact that brown tree snakes are likely to have upon invading new areas. Key Words: birds, Boiga irregularis, brown tree snake, declines, extinction, extirpation, and distribution of endangered animals and plants in northern. **Invasive Species: Animals - Brown Tree Snake (Boiga irregularis)** In Guams Brown Tree Snakes: Hanging Out, students will learn all about these animal invaders. The fascinating account describes how brown tree snakes first **What is an invasive species? - Encyclopedia of Life** Its long-term impact on human and animal populations is not known. The brown tree snake (Boiga irregularis) caused an alarming number of bird extinctions **Brown Tree Snake an Invasive Reptile - USDA APHIS** May 3, 2017 Brown tree snake, a slender, poisonous, primarily arboreal snake, one of the most small lizards and other reptiles, and the eggs of these animals. original invaders were stowaways aboard military aircraft and cargo ships **Battling the brown tree snake in Guam - BBC News** Nov 24, 2013 Since then, Guam have been as ravaged by non-native animals. Meanwhile, a handful of brown tree snakes that invaded in the 40s have **Brown Treesnake - Google Books Result** Brown Treesnake (Animal Invaders) [Barbara A Somervill] on . *FREE* shipping on qualifying offers. How the Brown Tree Snake made themselves **Boiga irregularis (brown tree snake) - CABI Web Sites** Brown Treesnake Frequently Asked Questions 6 airplanes, 14, 15, 19 amphibians, 21 biting, 12 31 ANIMAL INVADERS: B T For More Information. **Animals Behaving Worse Americas Least Wanted Nature PBS** A species profile for Brown Tree Snake from USDAs National Invasive Species The Quiet Invasion: A Guide to Invasive Species of the Galveston Bay Area **Boiga irregularis - GISD** How the Brown Tree Snake made themselves at home, disrupted the islands Straightforward texts examine four exotic animal species that have invaded the **Boiga irregularis (Brown Tree Snakes) on Guam and Its Effect on** Sep 19, 2012 Spotlight On An Invasive Species: The Brown Tree Snake and Its Devastation of Guam to extinction, or decimating healthy populations of animal species. One example of the potentially devastating effects of an invasion **Its Not the Only Alien Invader -** Aug 21, 2008 A variety of other damage has been directly attributed to brown tree snakes, including large population losses among other native animal **Brown Treesnake (Animal Invaders): Barbara A Somervill** May 10, 2014 A brown tree snake in its native habitat of North Maluku, Indonesia, in 2011. The fish have quickly become a problem for native animals: Its **brown tree snake Habitat, Control Methods, & Facts** Library of Congress Cataloging-in-Publication Data. Somervill, Barbara A. Brown treesnake / by Barbara A. Somervill. p. cm.(Animal invaders). Includes index. **Brown tree snake - Invasion Biology Introduced Species Summary** The brown tree snake (Boiga irregularis) was accidentally introduced to. Guam in the late 1940s or Agriculture's Animal and Plant. Health Inspection Service **Copy of Invasive Species: Brown Tree Snake by shadae Dean on** Mar 16, 2014 Guam Brown Tree Snake Eradication: Bad News for People & Wildlife these now-famous invaders had not yet grabbed the publics attention. **Brown tree snake could mean Guam will lose more than its birds** Nov 13, 1994 At the Honolulu airport, four brown tree snakes had been found in the eight . With plants and animals moving more readily from place to place, **Invasive species in Hawaii - Wikipedia** Native island species are predisposed and vulnerable to local extinction by invaders. When the brown tree snake (Boiga irregularis) was accidentally introduced As with a number of other geographically isolated islands, Hawaii has problems with invasive For example, the strawberry guava tree is one of Hawaii's worst invasive Also, people released pet fish like guppies, suckermouth catfish, and is also aggressively fighting to prevent the invasion of the brown tree snake.